



Caritas is ...



Charity

Caritas stands for an open, unprejudiced, and kindly disposition towards others.

Organised Aid

The Caritas services and facilities provide professional assistance for people in need.



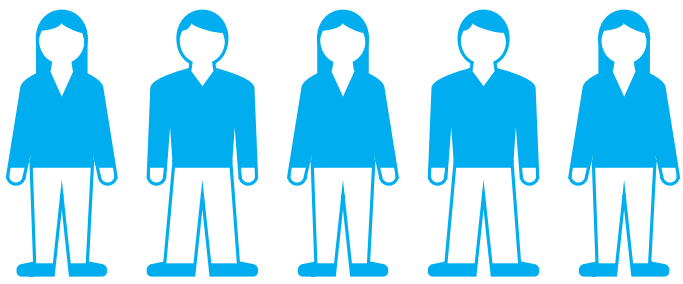
The Mission of the Church

Caritas is alive in the parishes and wherever people support one another, with Jesus Christ as their role model.



617,193

professional employees, **82,3 %** women



500,000

volunteers

Responsibilities of professional employees

77 %

Working with people

14

Administration and management

9

Custodial and technical



care for accompany support advise

12 million

people in Germany per year





Caritas in Germany – Tasks, organisation, and financing

What is Caritas? | Tasks and fields of work | Financing



Lawyer and partner for disadvantaged people

Social policy maker

Impetus for training and professional development

Provider of social services

local

24,391

facilities and services

in the

German Caritas Association

- Confederation of 6,180 legally independent agencies (not a company)
- Catholic Charitable association
- Organises the social services of the Catholic Church (www.caritas.de)

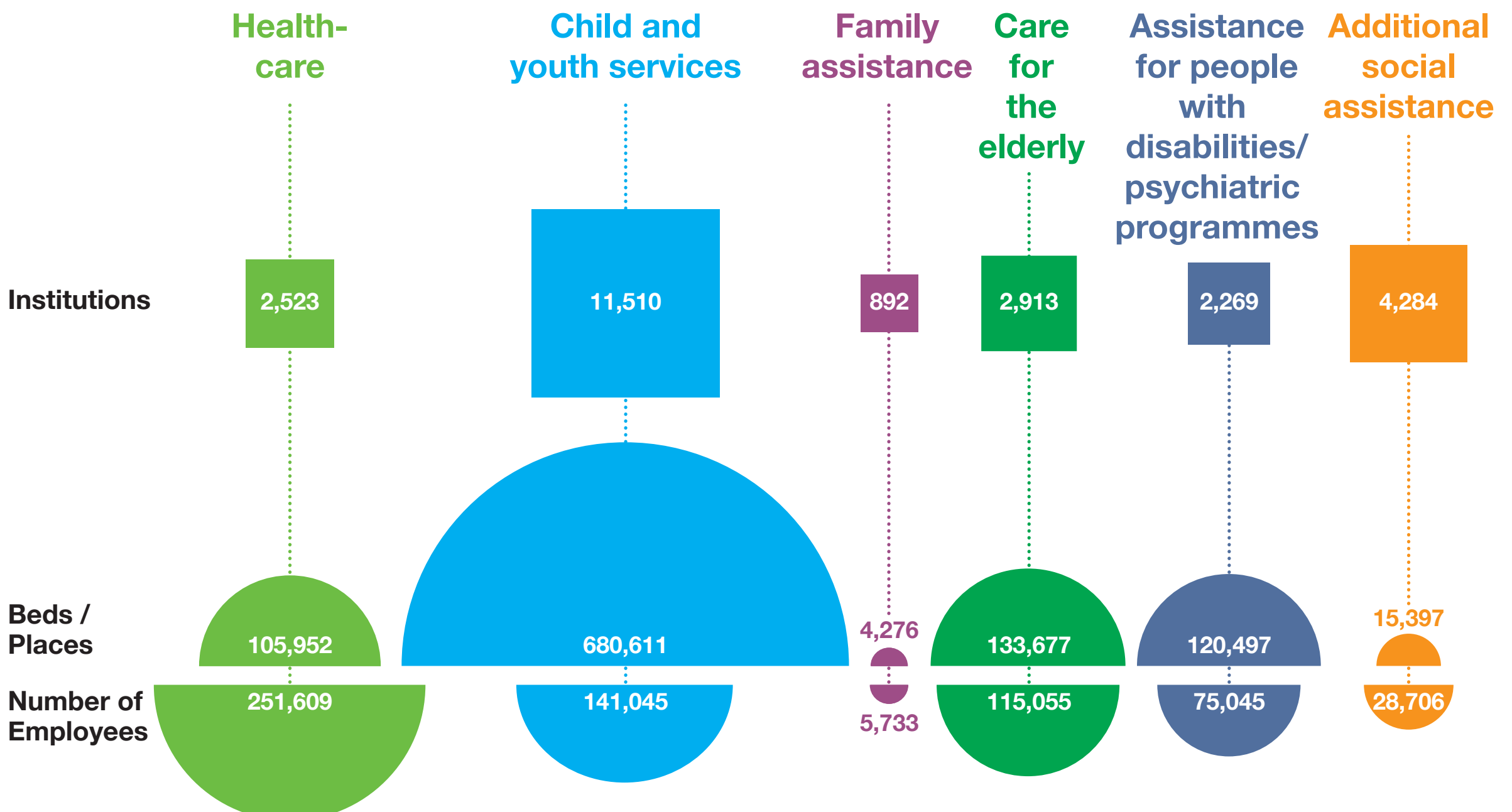


worldwide

Caritas is present in over 160 countries (www.caritas.org)



Overview of the fields (Data from 31/12/2014)





Caritas in Germany – Tasks, organisation, and financing

What is Caritas? | Tasks and fields of work | Financing

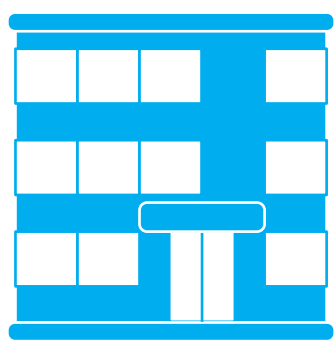
How is Caritas financed?

Social laws in Germany govern who is entitled to aid. The government commissions independent agencies such as Caritas with these (compulsory) tasks and defines how much money they receive from social insurance for these services. In some areas, funds are determined in negotiations between the social security agencies and the service providers. Caritas uses its own funds to finance volunteer and additional services such as counselling for people with debts or other social problems. The association also receives public grants. The scope of these grants varies from region to region. It is therefore not possible to issue uniform statements regarding nationwide financing. Therefore, the following graph shows selected examples.



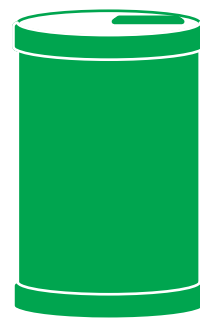
Public grants

from the EU, the federal government, the state, district, or municipality



Social insurance

statutory services provided by long-term care insurance, sickness insurance, accident insurance and pension insurance



Donations

and foundations from people who support Caritas' work



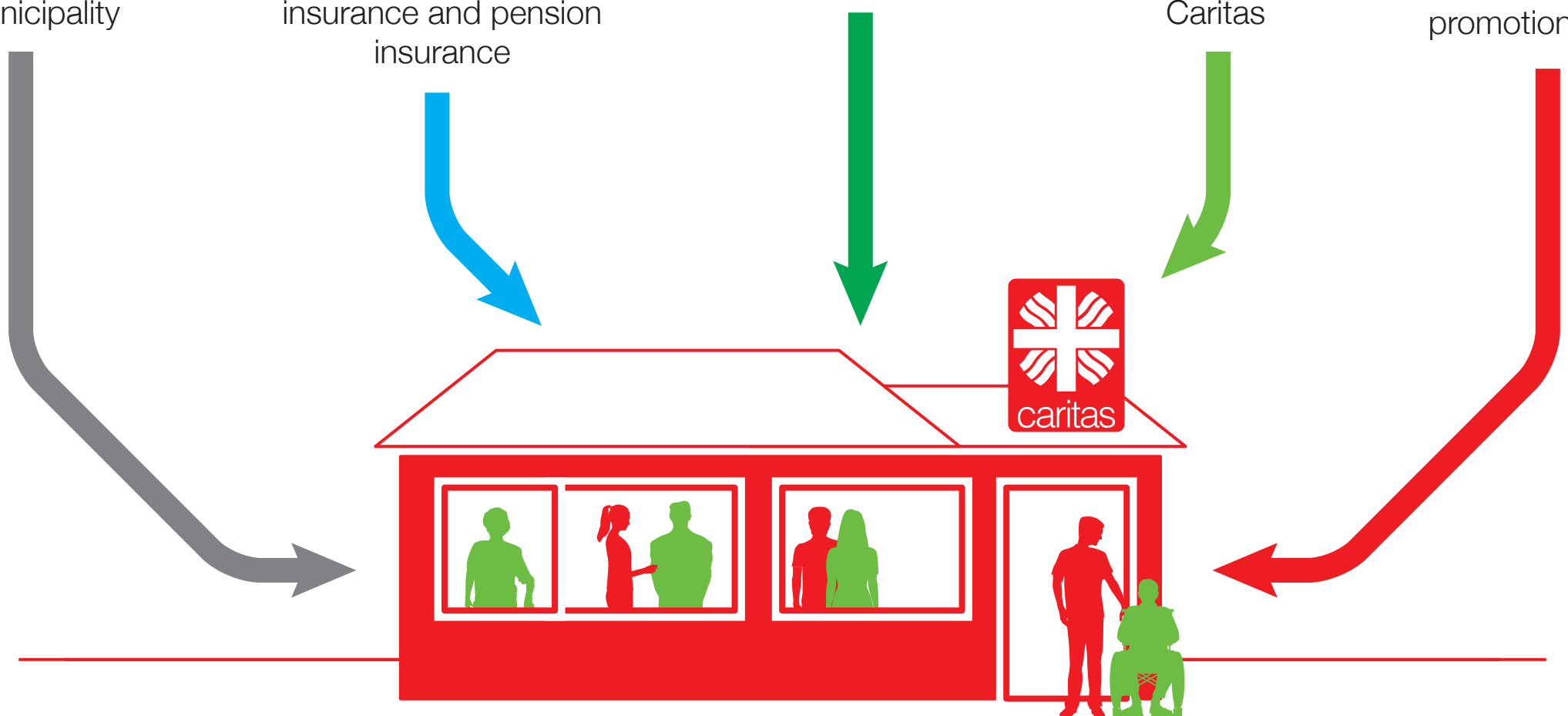
Contributions

from people who receive services from Caritas



Caritas funds

Church tax, rent, interest, promotion funds



Financing ...

■ Public funds ■ Caritas ■ Remuneration ■ Donations

Caritas Germany / central office

15.1 %

Caritas 46.7 %

remuneration 38.2 %

The central office of the German Caritas Association in Freiburg and the branch offices in Berlin and Brussels represent the interests of Caritas on a national and European level. Remuneration is paid from the sales proceeds from newspapers and charity stamps as well as from the proceeds from courses and other organised events. Caritas' own resources include 11.1 percent church tax and 9 percent promotion funds and foundations. The figures are based on data from the year 2013. www.caritas.de/transparenz

Caritas International (International Department of Caritas Germany)

Public funds 36.7 %

Caritas 18.2 %

Donations 45.1 %

Caritas International provides emergency and disaster aid worldwide, which is financed in part from federal and EU funds. Caritas International is dependent on donations for supporting the social development of disadvantaged groups. The figures listed here refer to overall funding (including project expenditures). The "Caritas" position includes grants from the Church, other public grants, and investment income. The figures are based on data from 2015.

Healthcare

For example

- Hospitals
- Public health and advice centres
- Counselling and welfare centres for HIV and AIDS patients
- Hospices
- Rehabilitation facilities for parents, children, and adults



Number of ...

Facilities

2,523

Places/Beds

105,952

251,609

Employees

Financing based on the example ...

■ Public funds ■ Social insurance ■ Caritas ■ Patients/clients

District nursing



Both the services provided by district nursing services and the financing of these services vary dramatically. These figures are based on data from the district nursing service provided by the Caritas Association Westeifel e. V. from 2015. Public grants are available for long-term care counselling at care advice centres.

Hospital



The financing of hospitals is governed by the Healthcare Insurance Act (SGB V). The states are responsible for the financing of investments.
Source: German Hospital Federation, 2014.

Hospice



The figures reflect the average financing of Caritas hospices in the year 2015. According to Book V § 39a of the Social Code (SGB), 95 percent of the costs eligible for grants are covered by health and care insurance. Hospices must cover five percent of the costs with their own funds and donations. The Caritas hospices cover a larger percentage of the costs in order to be able to pay their employees fair salaries and provide a large range of services.

Health retreat counselling

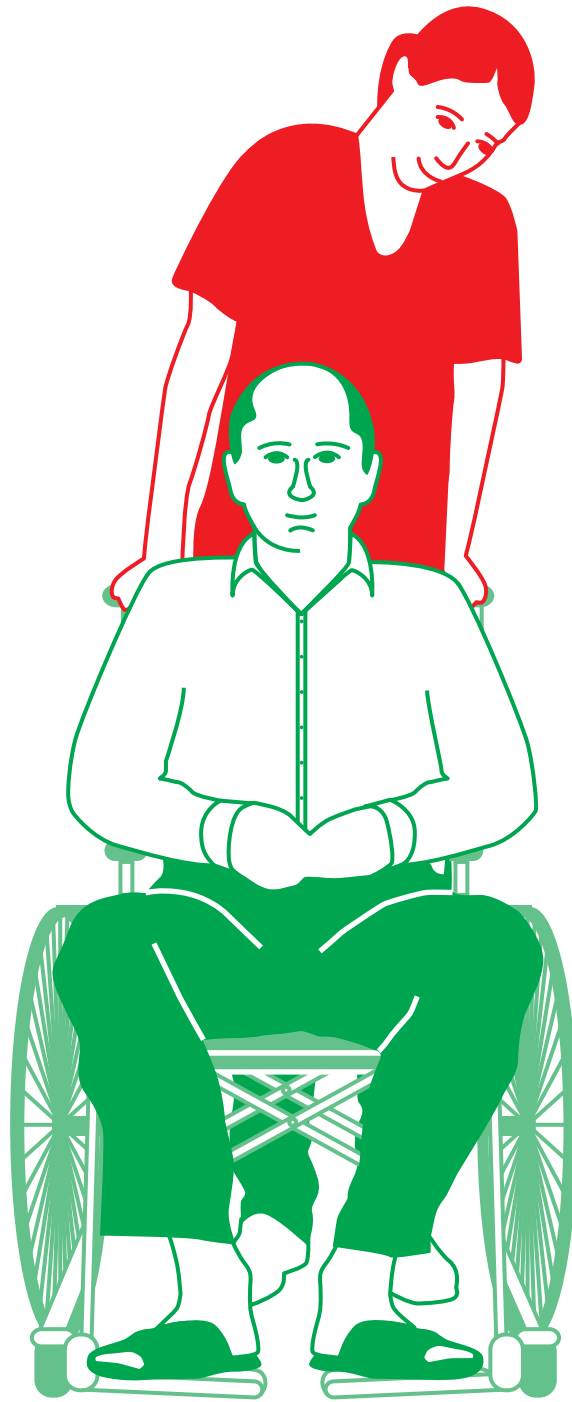


The figures are based on data from the Caritas Association Duisburg, 2016.

Care for the elderly

for example

- Care for the elderly and nursing homes
- Assisted living
- Short-time care
- Day care institutions
- Day care centres for the elderly
- Meals on wheels
- House emergency services



Number of ...

Facilities

2,913

Places/Beds

133,677

115,055

Employees

Financing based on the example ...

■ Social insurance ■ Caritas ■ Residents of care facilities

Stationary care for the elderly

social insurance 43 %

residents of care facilities 57 %

The financing of stationary care facilities is governed by the Long-Term Care Insurance Act (SGB XI). The proportion covered by social insurance varies depending on how many residents are allocated to the each of the levels of nursing care. If patients are unable to pay for their accommodation, welfare agencies cover their share of the costs. Sources: Federal Statistical Office of Germany, Long-Term Care Statistics 2013, nursing provided by Long-Term Care Insurance and Barmer GEK Long-Term Care Report 2015.

Counselling for the elderly and their relatives

Caritas 100 %

The figures are based on services provided by the Caritas Association Duisburg in 2016. Some counselling services are also financed in part by public grants.

Child and youth services

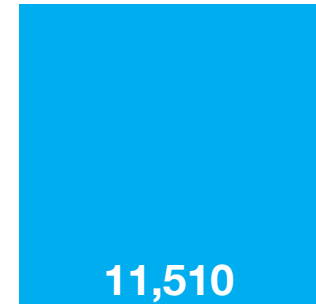
for example

- Nursery schools
- Day cares
- Children's homes
- Residential groups for children and youths, pregnant women and young mothers
- School social work
- Child-rearing counselling
- Family assistance

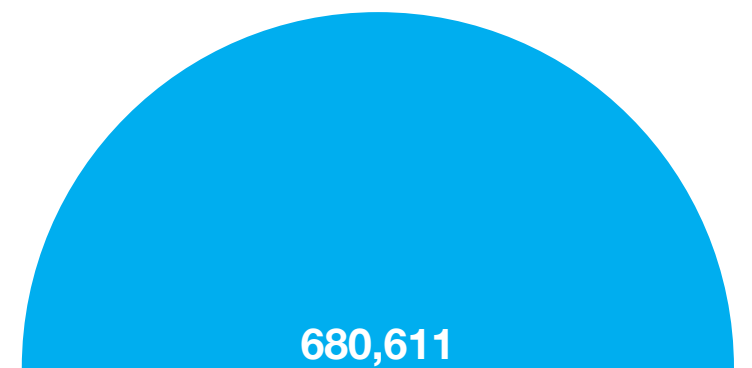


Number of ...

Facilities



Spots/Beds



141,045

Employees

Financing based on the example ...

■ Public funds ■ Caritas ■ Miscellaneous

Day nursery

Public funds 77 %

Caritas 15 % 8 %

The financing of day nurseries is governed differently in each state. Regional differences also exist due to varying amounts of municipal grants. The figures shown here are from the Zweckverband katholischer Tageseinrichtungen für Kinder im Bistum Essen (administration union of Catholic day nurseries for children in the diocese of Essen) (2015). In North Rhine-Westphalia, parents pay child care contributions to the municipalities. These fees are therefore included in the category public funding.

*This category includes the reversal of accruals and reserves, food, etc.

Youth services

Public funds 100 %

Assistance for child-rearing is uniformly governed nationwide by Book VIII of the Social Code. Youth services agencies in the administrative and municipal districts are responsible for the financing and supervision of independent agencies. Youth services may receive grants from Aktion Mensch and Deutsches Hilfswerk (charitable lotteries) etc. (third-party funds).

Family assistance

for example

- Women's housing
- Family care centres
- Counselling centres for marriage, family and other life issues
- Pregnancy counselling centres



Number of ...

Facilities

892

Places/beds

4,276

5,733

Employees

Financing based on the example ...

■ Public funds ■ Caritas

Child-rearing and family counselling

Public funds 95 %

5 %

The financing of child-rearing and family counselling is dependent on the scope of public grants. The figures are based on the services provided by Caritas in Duisburg in 2016.

Pregnancy counselling

Public funds 80 %

Caritas 20 %

There is no uniform nationwide financing for pregnancy counselling. The figures are based on counselling services offered by the Caritas Association Westeifel e. V. in Bitburg in 2015. In Duisburg, Caritas covers 65 percent of the costs due to limited public funds.

Assistance for people with disabilities and psychiatry

for example

- Homes for people with disabilities
- External residential group
- Nursery schools and schools for children and youths with disabilities
- Day care centres for people who are mentally ill / people with disabilities
- ambulant social psychiatric services
- Counselling for people with disabilities
- open programmes
- ambulant assisted living for people who are mentally ill / people with disabilities



Number of ...

Facilities

2,269

Places/beds

120,497

75,045

Employees

Financing based on the example ...

■ Public funds ■ Social insurance ■ Caritas

Care home for people with disabilities

Public funds 100 %

The services and funding of care homes for people with disabilities are governed by Book XII of the Social Code. Long-term care insurance covers part of the costs for residents in need of long-term care. For assistance with social integration, the no-netting principle applies to stationary and partially stationary care, i.e. welfare agencies pay service providers the gross remuneration. If beneficiaries are required to pay a share of the costs, this claim is enforced. The average refinancing shares of stationary social integration assistance amounted to 18.4 % in 2014 (proportion of income on gross expenditure) Source: BAGüS/con_sens 2015.

Workshops for people with disabilities

Public funds 58.3 %

Social insurance 41.6 %

Caritas covers 0.1 percent of the costs. The figures are based on the workshops of St. Josefshaus Herten, 2015.

Additional social assistance

for example

- Debt counselling
- Addiction and drug counselling
- General social counselling
- Assistance for the homeless
- Employment and training projects / enterprises for the unemployed
- Welfare associations
- Volunteer centres
- Travellers' aid office
- Soup kitchen / food bank
- Clothing stores



Number of ...

Facilities



Places/beds



Employees

Financing based on the example ...

■ Public funds ■ Social insurance ■ Caritas

Debt counselling

Public funds 72 %

Caritas 28 %

The financing of debt counselling is dependent on grants from the state and the administrative district. The figures are based on debt counselling services offered by the Caritas Association Westeifel e. V. in Bitburg in 2015. The proportion of public funding in the neighbouring district of Daun is 89 percent; in Prüm it is 54 percent. Public funds cover 85 percent of the financing for debt and bankruptcy counselling services provided by Caritas in Duisburg.

Addiction counselling

Public funds 73 %

6 % Caritas 21 %

The financing for addiction counselling is dependent on grants from the state and administrative district. The figures are based on addiction counselling services offered by the Caritas Association Westeifel e. V. in Bitburg-Prüm in 2015. In the neighbouring district of Daun, Caritas covers 50 percent of the costs. Public funds cover 88 percent of the costs for services provided by Caritas in Duisburg (addiction assistance centre and addiction counselling).

General social counselling

Caritas 100 %

General social counselling is a service provided by many Caritas associations. In general, these services are financed in part or in full by Caritas funds.

Volunteer centre

Public funds 24.3 %

Caritas 75.7 %

The figures are based on data from the CariThek volunteer centre in Bamberg, 2015. The public funds are largely municipal funds (grants from the administrative district and the city of Bamberg).

Assistance for single parents

Caritas 100 %

The data refers to services provided by Caritas in Duisburg in 2016.

Services for immigrants

for example

- Youth migration service
- Migration counselling for adult immigrants
- Refugee and asylum seekers counselling
- General integration counselling
- Cultural and recreation centre for immigrants
- Social education services for immigrant children, youths, and parents
- Legal counselling centre for immigrants
- Counselling services for women who have been victims of human trafficking
- Social services in homes for asylum seekers, those entitled to political asylum, and resettlers of German origin



Number of ...

Facilities

568



1,764

Employees

Financing based on the example ...

■ Public funds ■ Caritas

Counselling for refugees

Public funds 65.5 %

Caritas 33.8 %

Counselling for refugees includes counselling for return or onward migration and deportation observation. The figures listed here are averages based on the survey data collected from 115 counselling centres (2016). Generally, mixed financing is practised in this field; just under a quarter of the counselling centres receive full funding from individual sponsors. Public funds comprise grants from the EU (2.8 %), the federal government (4.5 %), the states (34.1 %), and municipalities (24.1 %). The Caritas funds consist of own resources, including donations (11.2 %), other Church funds (17.5 %), and other income and grants (5.1 %).

Refugee aid

Public funds 85.85 %

Caritas 14.15 %

The figures are based on refugee aid provided by the Caritas Association Mannheim e. V. in 2015. Refugee aid comprises the following services: "Nah an den Menschen von weit weg" (Close to the people from far way - support for volunteers), municipal refugee counselling, return migration counselling, court and social counselling in the state reception centre and AMIF (asylum, migration and integration fund) return migration counselling.

Counselling for migrants and refugees

Public funds 90 %

Caritas 10 %

The figures are based on the services provided by Caritas in Duisburg in 2016.